



Mandal Public Library
Slimline Radius Shelving System

DESIGN OPTIONS

With our Softline/Slimline/Frontline Shelving range you have several design options. The following will give you an overview of our standardized options as to steel and wood colours, fabrics, laminate etc.

We offer more than 60 years of experience with interior design of libraries and development of library furniture. Therefore our creative team will be happy to help you with special requests as to materials not covered by these design options.

Please contact our local sales office for project support and offering.



METAL PARTS

(End panels, crossbars, brackets, shelves, functions, kickplates, light housing)

The metal parts can be powder coated in standard BCI steel colours at no extra charge*

DESIGN OPTIONS

STANDARD STEEL COLOURS



Mango 237



Mandarin 238



Terracotta 239



Oriental red 240



Copper 241



Mulberry red 206



Mahogany 50



Deep purple 242



Coffee 168



Cobalt blue 208



Apple green 90



Fjord 212



Provence blue 213



Navy 243



Racing green 74



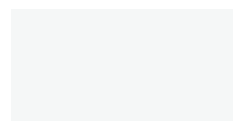
Midnight blue 157



Forest green 244



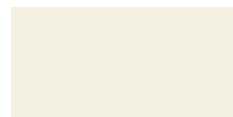
Shadow white 223



White 222



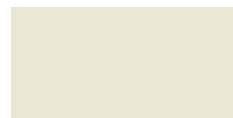
Steel 220



Pearl 217



Graphite grey 224



Champagne Mist 25



Concertina grey 229



City grey 236



Gothia grey 233



Antracite 235



Charcoal 23



City black 51



Black pearl 231



Black 232

DESIGN OPTIONS

WOODEN PARTS

(Shelves, end panels, display panels, table tops)

The wooden parts can be manufactured in a number of different lacquered wood veneers.



Ash 68



Beech 70



Birch 69



Oak 66



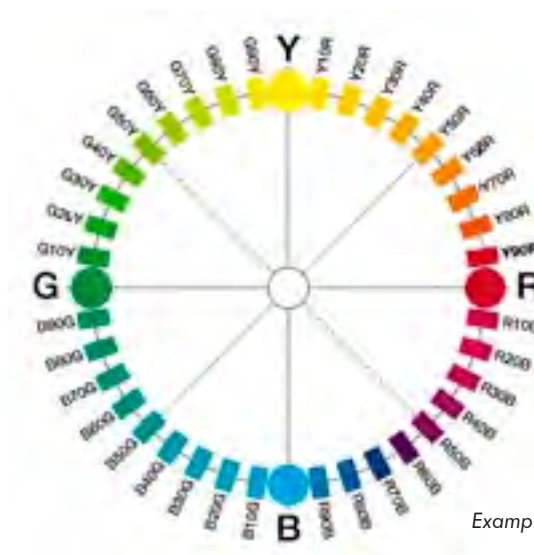
Maple 67



Light steamed beech 55



Cherry 54



Examples of NCS colours

*A higher surcharge for colours with "metallic" look or different surface textures must be expected.

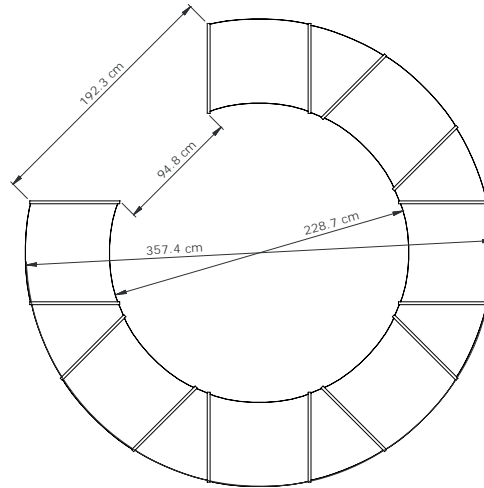
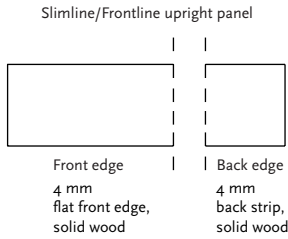
Please note that wooden components which are to be painted in other colours may be manufactured in MDF. Please note that our wooden shelves and table tops are manufactured with a stronger paint to resist the wear and tear of books sliding across the painted surface. For maximum robustness we recommend laminated wooden shelves. Please be aware that when painted the slats in display end panels may not be fully covered.

SLIMLINE RADIUS SHELVING

The following page will show basic configurations of the Slimline Radius Shelving System based on Slimline components. The shelving system is double-sided.

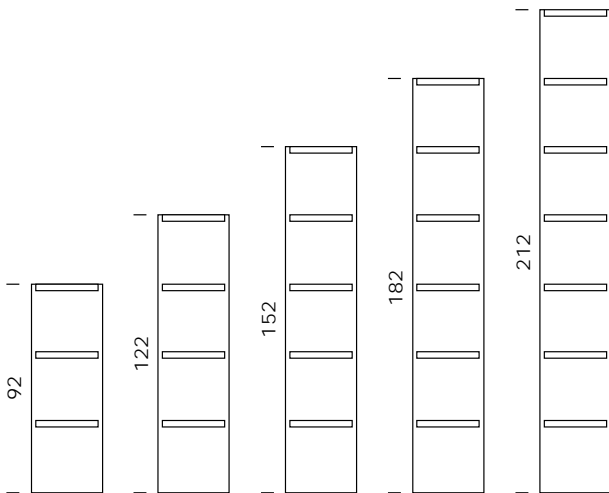
The shelving system has end panels with a straight front edge. The wooden shelves are concave on the inside of the circle and convex on the outside of the circle. The concave shelves have a depth of 31/25 cm and the convex shelves have a depth of 36/32 cm. The inside diameter of full shelving circle is 228.7 cm and the outside diameter of full shelving circle is 357.4 cm.

The start- and add-on bays have a full back which the 45 degree corner shelf bay does not.



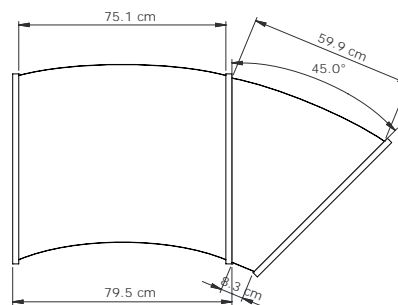
HEIGHTS

The shelving system comes in 5 heights; 92, 122, 152, 182 and 212 cm. Heights include adjustable feet (max. 2 cm). The shelves are adjustable in 2.5 cm increments.



WIDTHS

The bays are available as starter and add-on bays, module 75 cm. A starter bay has two end panels and an add-on bay has one end panel.



DEPTHS

The end panel depth is 68.9 cm, the concave shelves are 31/25 cm and the convex shelves are 36/32 cm.

